

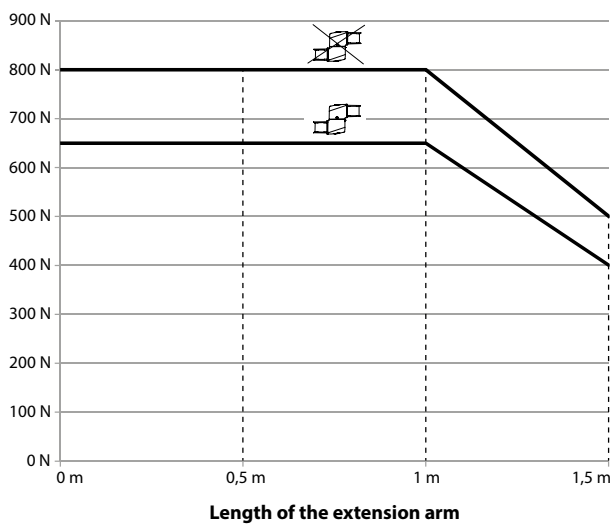
Aluminium suspension system CS-3000^{neXt}

The CS 3000 neXt is characterised by high functionality and an attractive design. The system as a supplement to the CS-3000 series, the system benefits from the simplest installation and has special features such as smooth transitions from the tube to the component, high ease of cleaning, and the usual high BERNSTEIN quality. The wide variety of components paired with high stability and load capacity create the prerequisites for individual solutions.

Product features

- Suspension system for loads up to 80 kg (with 1 m outrigger length)
- Individual configurability
- Can be combined with CS-3000 + CS-480 B.fleX suspension systems
- Wide range of connections due to large portfolio of components

Load diagram CS-3000^{neXt} for static load



Application examples

CS-3000_{neXt} suspension system from above

- CS-3000 next Wall joint
- CS-3000 next Elbow
- CS-3000 next Coupling
- CC-5000 next Enclosure

CS-3000_{neXt} suspension system with turn/tilt coupling

- Turn/tilt coupling with IPC
- Rotation angle: 300° with stop, can be limited by optional rotation angle segments
- Tilt angle with adjustable stop: +/-105°
- Screwed mounting opening, suitable for feed-through of DVI connectors

CS-3000_{neXt} suspension system with rotating wall joint

- CS-3000 neXt Wall joint rotatable
- CS-3000 neXt 250 mm tube
- Panel coupling with VESA connection on CC-5000 neXt

CS-3000_{neXt} suspension system with turn/tilt coupling

- Turn/tilt coupling with IPC
- Rotation angle: 300° with stop, can be limited by optional rotation angle segments
- Tilt angle with adjustable stop: +/-105°
- Screwed mounting opening, suitable for feed-through of DVI connectors

SUSPENSION SYSTEM CS-3000 next

Materials

- Anodised aluminium profiles
- Components: Aluminium die cast
- Aluminium covers on installation openings
- Bearings: POM
- Seals: Neoprene

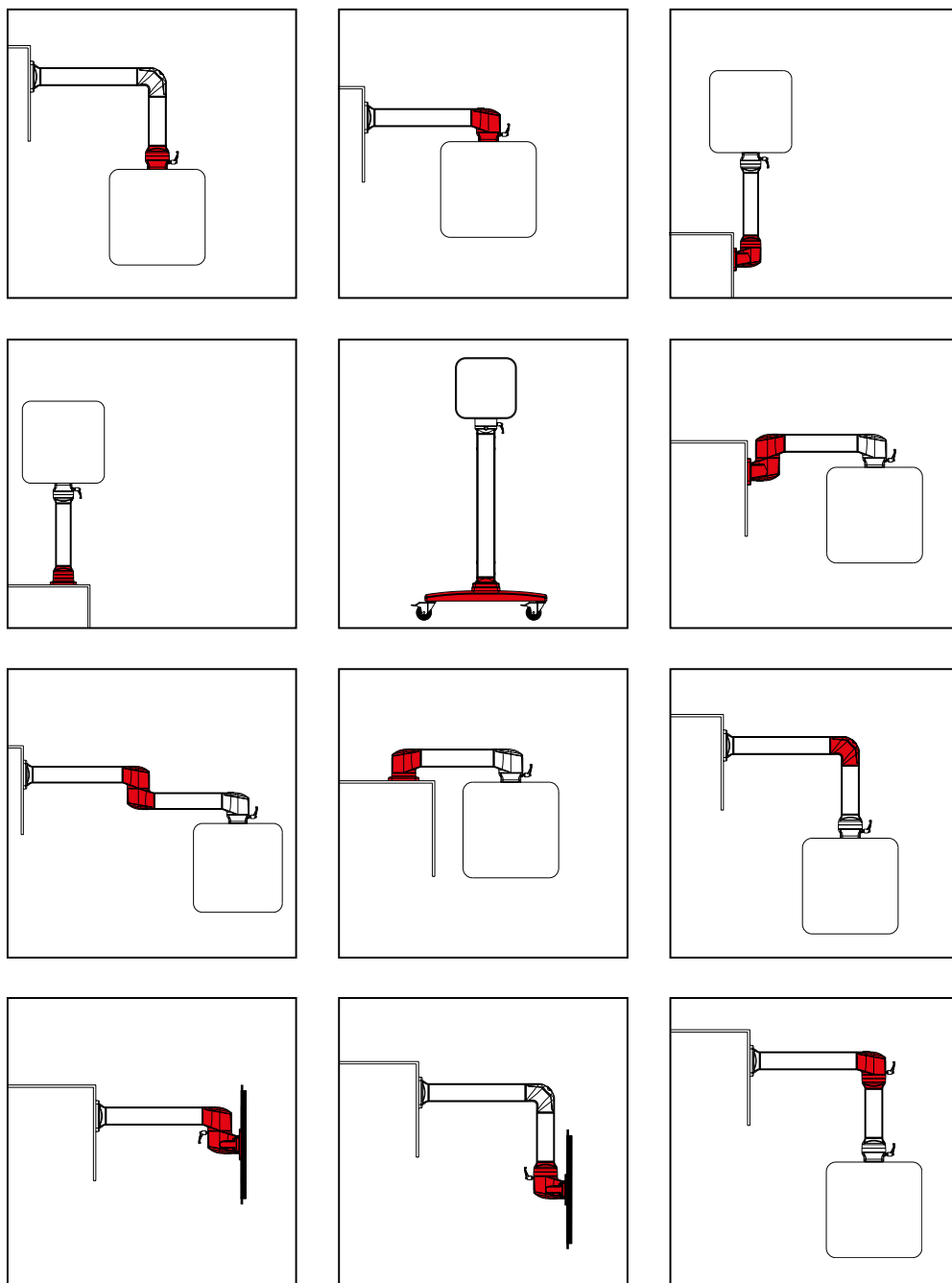
Colours

- Components: white aluminium (RAL 9006) or anthracite grey (RAL 7016)
- Tubes: Aluminium, naturally anodised
- Components and tubes can all be optionally powder-coated to a wide variety of RAL colours



Application examples of the CS-3000 neXt suspension system

Wide range of configuration options



Highlights



Reducing elbow

- A combination of the CS-3000 with the light-duty suspension system CS-3000 neXt
- Areas of use:
 - Higher loads / extension of the arm lengths by using CS-3000 in the horizontal plane
 - For the connection of flat enclosures with narrow components and tubes by using CS-3000 neXt in the vertical plane



Turn/tilt coupling

- Allows the connection of panels / displays or IPC from above or below
- Angle of rotation 300° with stop, limitable by optional rotation angle segments
- Tilt angle with adjustable stop: +/-105°
- Screw-fixed installation opening, suitable for DVI connectors
- With an additional adapter plate for rear connection of panels / displays or IPC with fixed rear panels



Panel coupling

- For a connection at the rear of displays / monitors with VESA
- For the connection of flat operating enclosures via the rear panel
- VESA flange size, hole pattern 75 and 100
- Suspension system attachment in vertical and horizontal version possible
- Individual colour combination of all components in accordance with RAL colours

Assembly

- Short assembly times and therefore extensive cost savings:
 - Slide the tube onto the component
 - Press down slightly
 - Tighten screws
- Cable and installation openings at all joints in the system
- Use of a DVI connector is possible

Function

- Turning range of the rotary components: 300°
- Regulation of the rotation angle via swivel angle limiter

Tubes

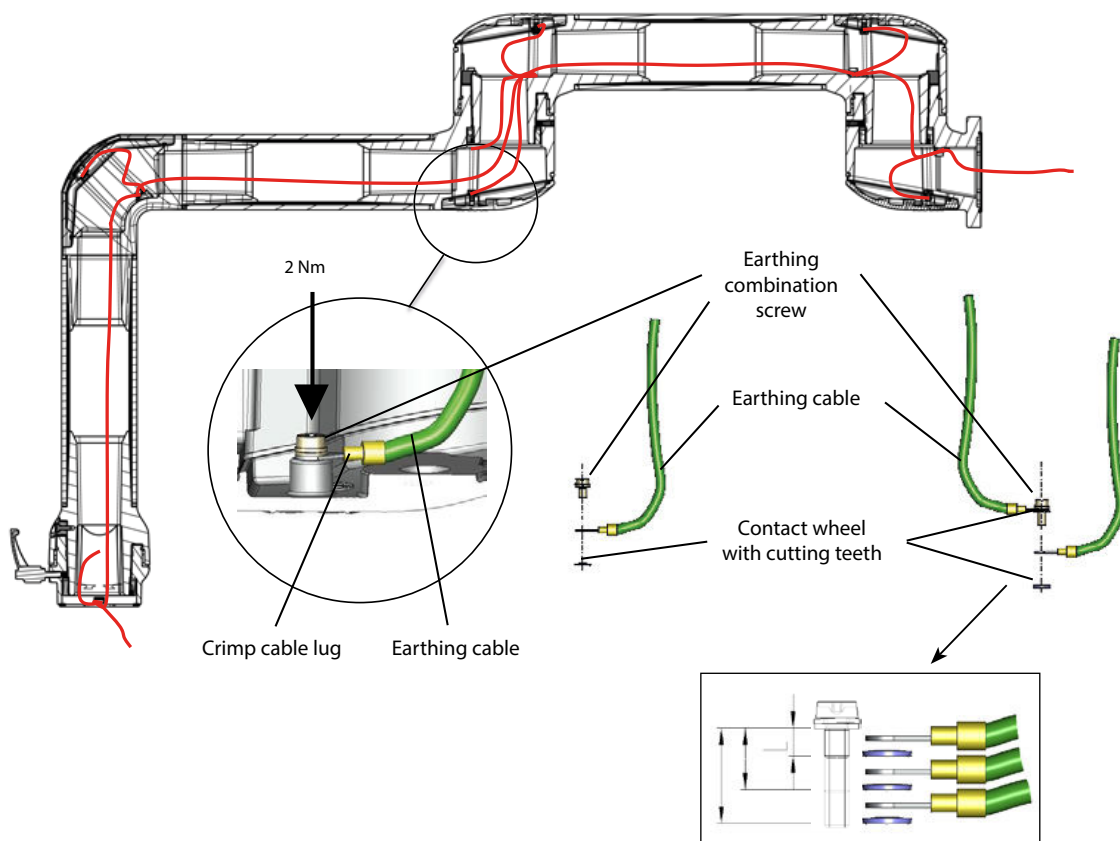
- Standard lengths of 250 mm up to 1500 mm in 250 mm steps
- Machined tubes in special lengths

One-man assembly


Quickly and safely mounted



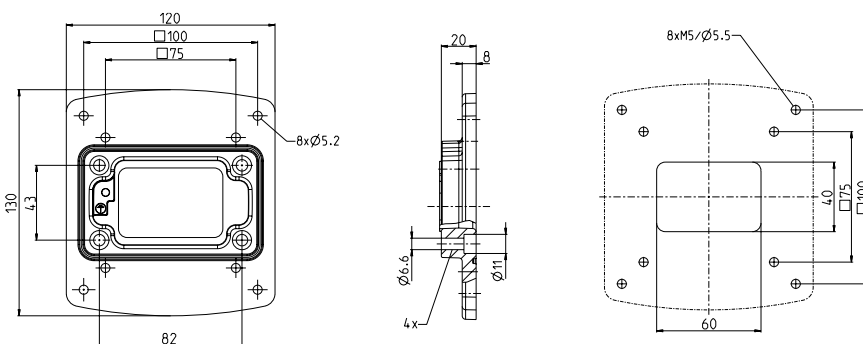
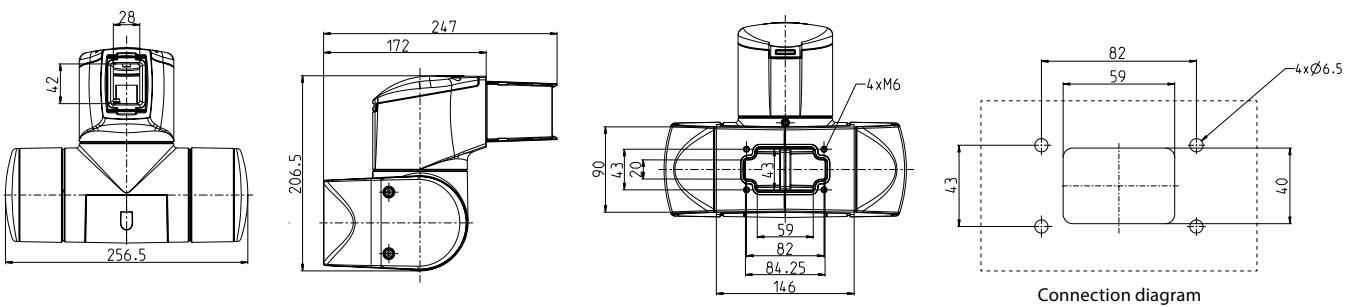
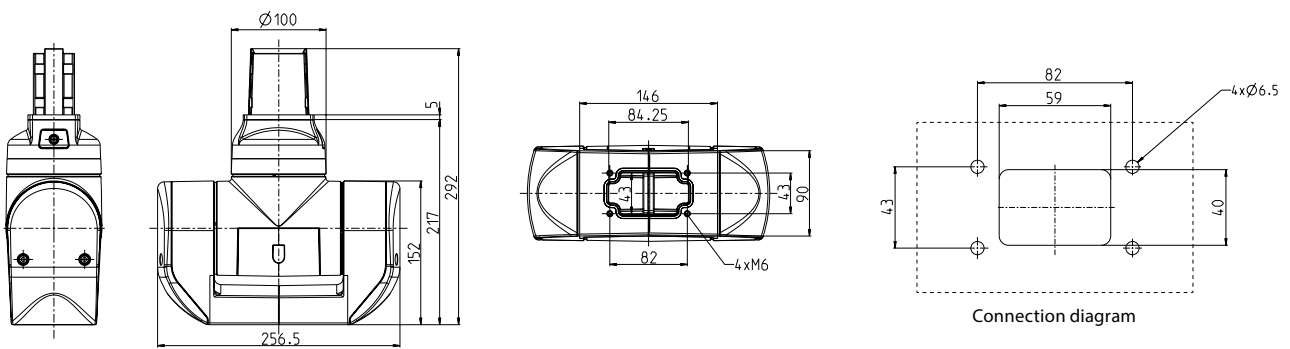
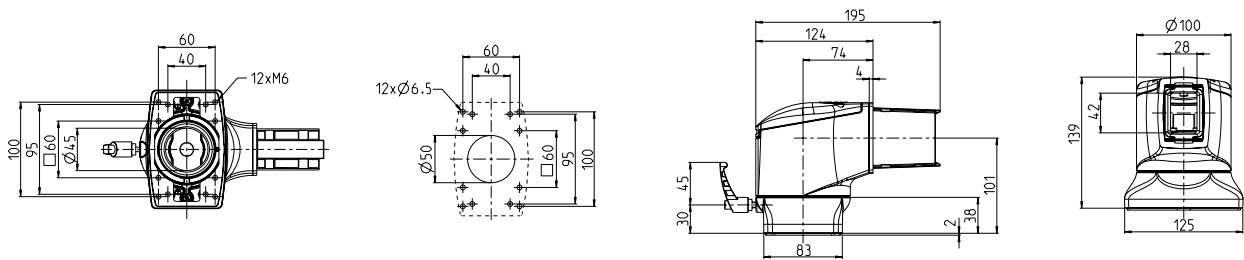
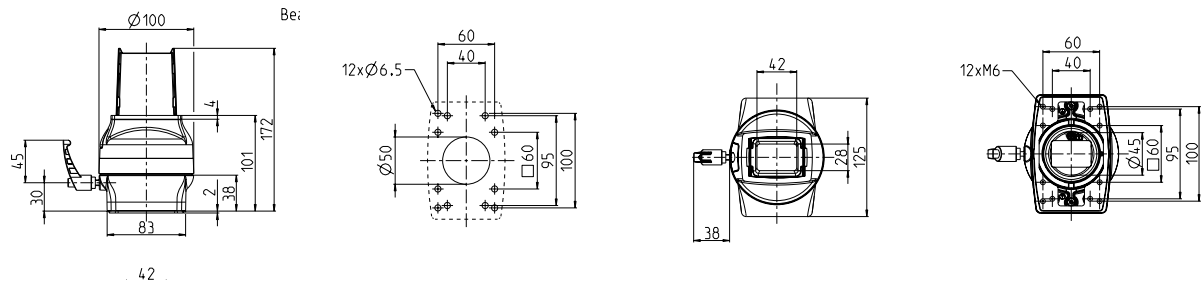
Earthing example




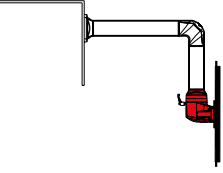

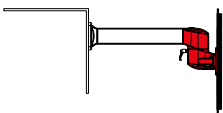

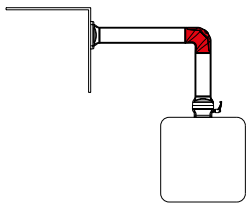

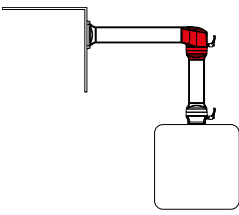
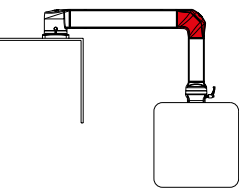
SUSPENSION SYSTEM CS-3000

Article	Application example
	<p>Straight coupling</p> <p>1017300002 RAL 9006 white aluminium</p> <ul style="list-style-type: none"> • Angle of rotation 300° with stop • Weight: 1630 g <p>(An adapter (narrow enclosures) is required for attachment to enclosures < 83 mm)</p>
	<p>Elbow coupling</p> <p>1017300003 RAL 9006 white aluminium</p> <ul style="list-style-type: none"> • Angle of rotation 300° with stop • Screw-fit installation opening • Weight: 2070 g
	<p>Turn/tilt coupling S</p> <p>1017300072 RAL 9006 white aluminium (tilt moment 56 Nm) 1017300078 RAL 9006 white aluminium for panel (reduced tilt moment 27 Nm)</p> <ul style="list-style-type: none"> • For connecting panels / displays / IPC with screw-fixed rear panel, the fixing hole pattern is flexible • Angle of rotation 300° with stop • Tilt angle with adjustable stop: +/-105° (without attachments) • Screw-fixed installation opening, suitable for DVI connectors • Weight: 4600 g
	<p>Turn/tilt coupling W</p> <p>1017300070 RAL 9006 white aluminium (tilt moment 56 Nm) 1017300076 RAL 9006 white aluminium for panel (reduced tilt moment 27 Nm)</p> <ul style="list-style-type: none"> • For connecting panels / displays / IPC with screw-fixed rear panel, the fixing hole pattern is flexible • Angle of rotation 300° with stop • Tilt angle with adjustable stop: +/-105° (without attachments) • Screw-fixed installation opening, suitable for DVI connectors • Weight: 5100 g
	<p>Adapter plate VESA 75/100</p> <p>9806000044 RAL 9006 white aluminium</p> <ul style="list-style-type: none"> • All that is needed (in addition for the turn/tilt coupling) to connect panels / displays / IPC to the rear side with the VESA 75/100 hole pattern • Weight: 300 g

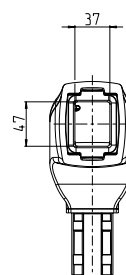
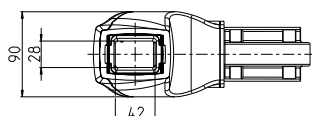
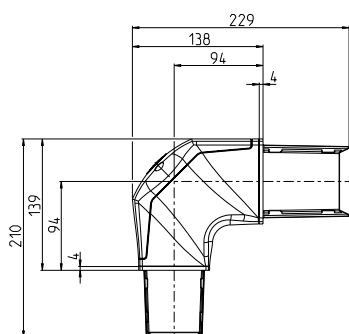
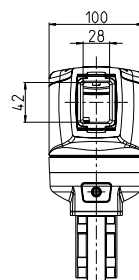
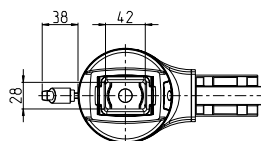
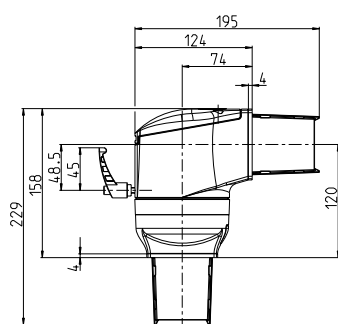
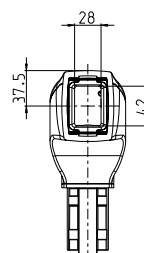
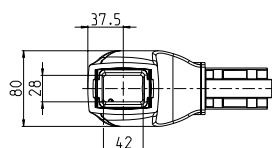
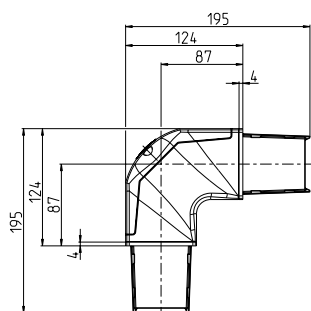
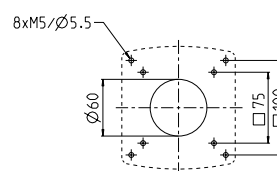
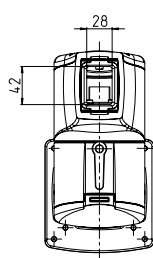
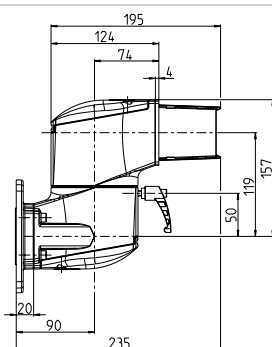
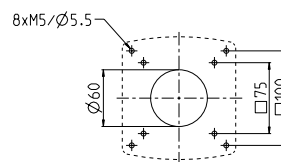
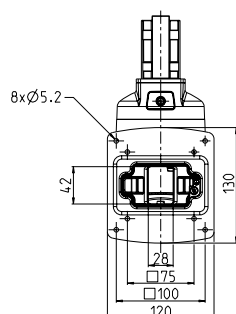
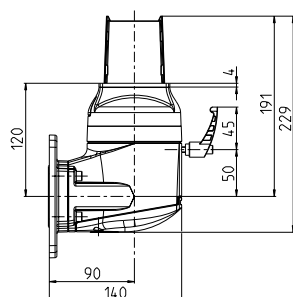
Dimensions in mm




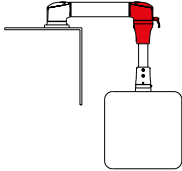

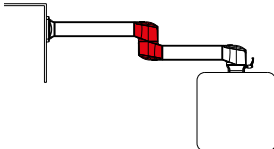

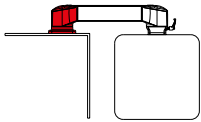

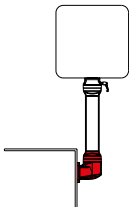

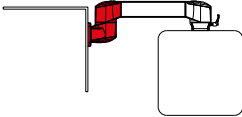
SUSPENSION SYSTEM CS-3000 ~~neXt~~

	Article	Application example
	<p>Panel coupling S</p> <p>1017300004 RAL 9006 white aluminium</p> <ul style="list-style-type: none"> • For attachments to the rear of panels / displays or operating enclosures with a screw-fit rear panel • Standard hole pattern VESA 75/100 • Angle of rotation 300° with stop • Screw-fit installation opening • Weight: 2530 g 	
	<p>Panel coupling W</p> <p>1017300005 RAL 9006 white aluminium</p> <ul style="list-style-type: none"> • For attachments to the rear of panels / displays or operating enclosures with a screw-fit rear panel • Standard hole pattern VESA 75/100 • Angle of rotation 300° with stop • Screw-fit installation opening • Weight: 2970 g 	
	<p>Elbow</p> <p>1017300007 RAL 9006 white aluminium</p> <ul style="list-style-type: none"> • Screw-fit installation opening • Weight: 1250 g 	
	<p>Elbow, rotary</p> <p>1017300008 RAL 9006 white aluminium</p> <ul style="list-style-type: none"> • Angle of rotation 300° with stop • Screw-fit installation opening • Weight: 2320 g 	
	<p>Reducing elbow</p> <p>1017300009 RAL 9006 white aluminium</p> <ul style="list-style-type: none"> • Elbow coupling for the combination of CS-3000 neXt and CS-3000 suspension systems • Screw-fit installation opening • Weight: 1770 g 	

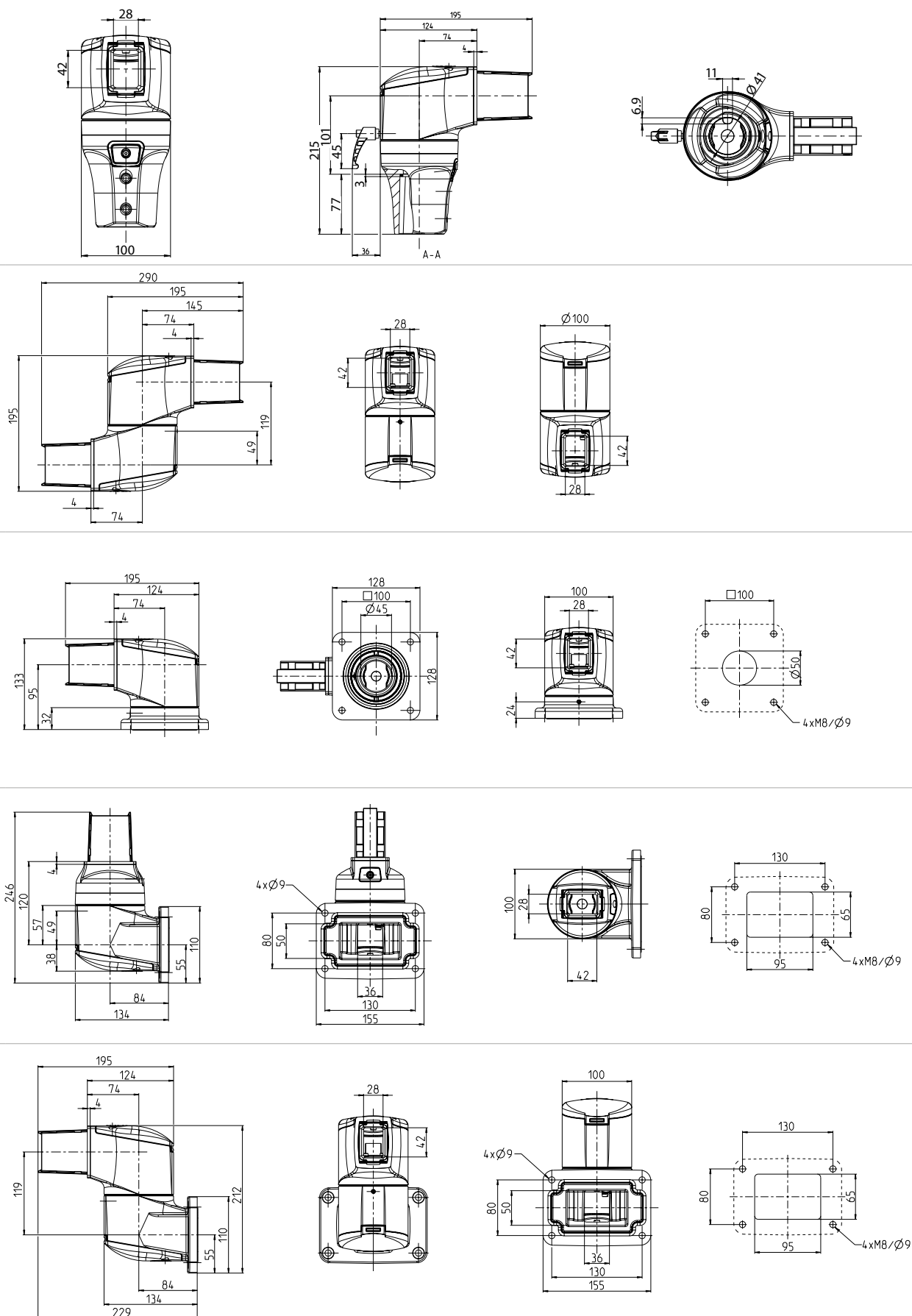
Dimensions in mm



SUSPENSION SYSTEM CS-3000 ~~next~~

Article	Application example
 <p>Elbow, rotary (extension CS-480 B.flex) 1014800008 RAL 9006 white aluminium</p> <ul style="list-style-type: none"> • Aluminium die-casting • Angle of rotation 300° with stop • Weight: 2457 g • Connection for equipotential bonding 	
 <p>Intermediate joint 1017300010 RAL 9006 white aluminium</p> <ul style="list-style-type: none"> • Angle of rotation 300° with stop • 2 screw-fit installation openings • Weight: 2740 g 	
 <p>Top joint 1017300014 RAL 9006 white aluminium</p> <ul style="list-style-type: none"> • Angle of rotation 300° with stop • Screw-fit installation opening • Weight: 2200 g 	
 <p>Wall joint S 1017300011 RAL 9006 white aluminium</p> <ul style="list-style-type: none"> • Angle of rotation 300° with stop • Screw-fit installation opening • Weight: 2490 g 	
 <p>Wall joint W 1017300012 RAL 9006 white aluminium</p> <ul style="list-style-type: none"> • Angle of rotation 300° with stop • 2 screw-fit installation openings • Weight: 2930 g 	

Dimensions in mm



SUSPENSION SYSTEM CS-3000

Article

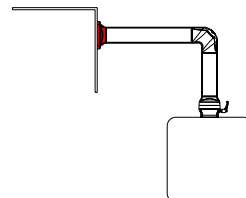
Application example



Base / wall flange

1017300015 RAL 9006 white aluminium

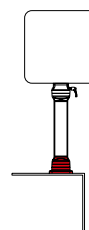
- Weight: 830 g



Base, rotary

1017300013 RAL 9006 white aluminium

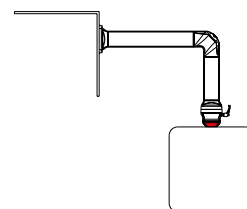
- Angle of rotation 300° with stop
- Weight: 1770 g



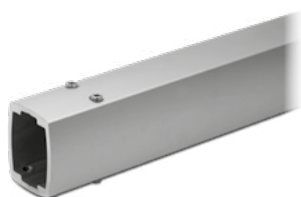
Adapter (narrow enclosures)

1017300001 RAL 9006 white aluminium

- Only to be used together with couplings
- For attachment to narrow enclosures with depths < 83 mm
- Weight: 300 g



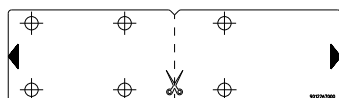
Tube profiles



Standard lengths (available from stock)	Article number	Weights in kg
Tube cross-sections x Length		
55 x 75 x 250 mm	9524700001	0.90
55 x 75 x 500 mm	9524700002	1.70
55 x 75 x 750 mm	9524700003	2.60
55 x 75 x 1000 mm	9524700004	3.40
55 x 75 x 1250 mm	9524700005	4.30
55 x 75 x 1500 mm	9524700006	5.20

Drilling label for special tube lengths

9012328000



Using the template, bore the holes in the exact positions. Choose the appropriate connection section and order the number of drilling templates required.

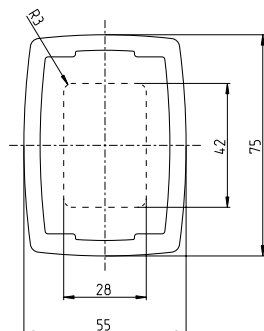
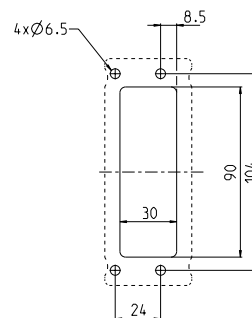
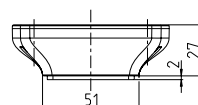
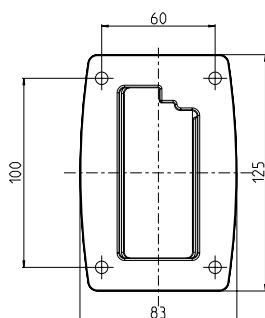
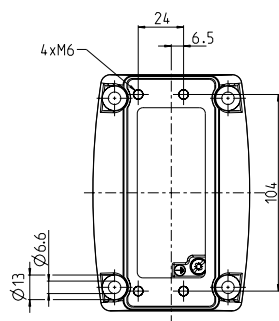
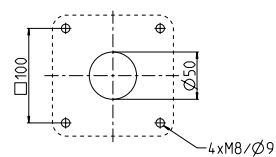
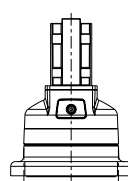
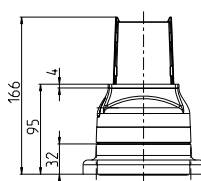
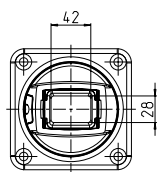
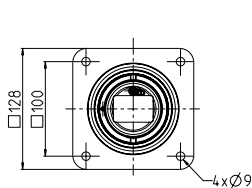
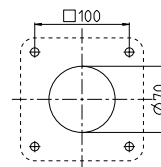
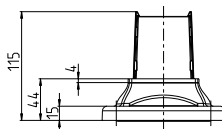
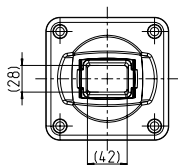
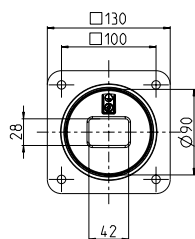


Drilling jigs for special tube lengths

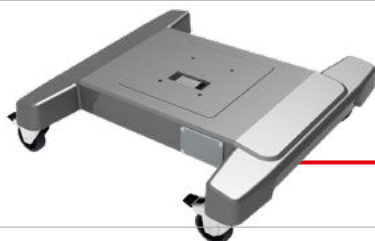
9806936000 Set 3-piece

Once the tube has been cut to its desired length, drilling jigs can be fitted. The jigs ensure a stable base and help prevent tube damage. The integrated drill bushes specify the location of the threaded holes and guide the drill.

Dimensions in mm



Quick adjustment ergo•slide
see pages 108 ff.



Stand base flex•base
see pages 118 ff.